



**Reward
Hospitality**

T&S BRASS AND BRONZE WORKS, INC.

www.rewardhospitality.com.au

Model No.

AS-0113-06V20-BC

Item No.

4710014

EVERSTEEL™



This Space for Architect/Engineer Approval

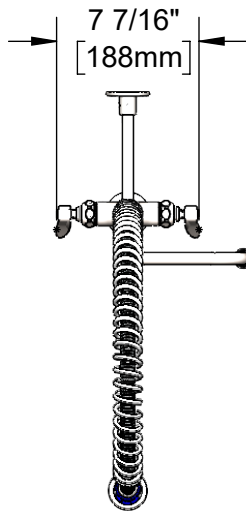
Job Name _____ Date _____

Model Specified _____ Quantity _____

Customer/Wholesaler _____

Contractor _____

Architect/Engineer _____



S059X-V20
Stainless Steel
6" Swing Nozzle w/
2.0 GPM Vandal
Resistant Aerator.
VR Key (Included)

44" Flexible Stainless Steel
Hose w/ Spring & Spray Valve

Items Not Shown
For Clarity

Stainless Steel
3/8" NPT x 24" Riser

Stainless
Steel Finger
Hook

S-0107-C
Stainless Steel
0.65 GPM
Spray Valve

S-0109-01
Stainless
Steel
6" Wall
Bracket

46 1/4"
[1175mm]

EasyInstall
Lock Nut &
Bushing

2 5/16"
[58mm]

6"
[153mm]

12 13/16"
[325mm]

9 5/8"
[245mm]

Mounting
Surface

Stainless Steel Full Turn
Eterna Cartridges w/
Spring Checks & Stainless
Steel Lever Handles w/
Color Coded Indexes

18" Flexible Stainless Steel Supply
Hoses w/ G1/2 Female Swivel Fittings
(Compatible w/ 1/2" NPSM Threads)

16 7/8"
[429mm]

2 5/16"
[59mm]

7 1/8"
[181mm]

Ø 2 1/4"
[57mm]
Deck Flange

14 1/16"
[357mm]

Stainless
Steel
EasyInstall
Add-On
Faucet w/
Full Turn
Eterna
Cartridge
& Lever
Handle

1 7/8"
[48mm]
Maximum
Thickness

Rough-In Requirement:
Ø 1 1/2" [38mm] Mounting Hole

Product Specifications:

Pre-Rinse Unit: EasyInstall Stainless Steel Single Hole Deck Mount Mixing Faucet, SS Full Turn Eterna Cartridges w/ Spring Checks, SS Lever Handles, SS Add-On Faucet, SS 6" Swing Nozzle w/ 2.0 GPM VR Aerator, 44" Flexible Stainless Steel Hose, SS 0.65 GPM Spray Valve, SS 6" Wall Bracket & Flexible Stainless Steel Supply Hoses

Product Compliance:

ASME A112.18.1 / CSA B125.1
NSF 61 - Section 9
NSF 372 (Low Lead Content)
AS/NZ WaterMark / WELS



**Reward
Hospitality**

T&S BRASS AND BRONZE WORKS, INC.

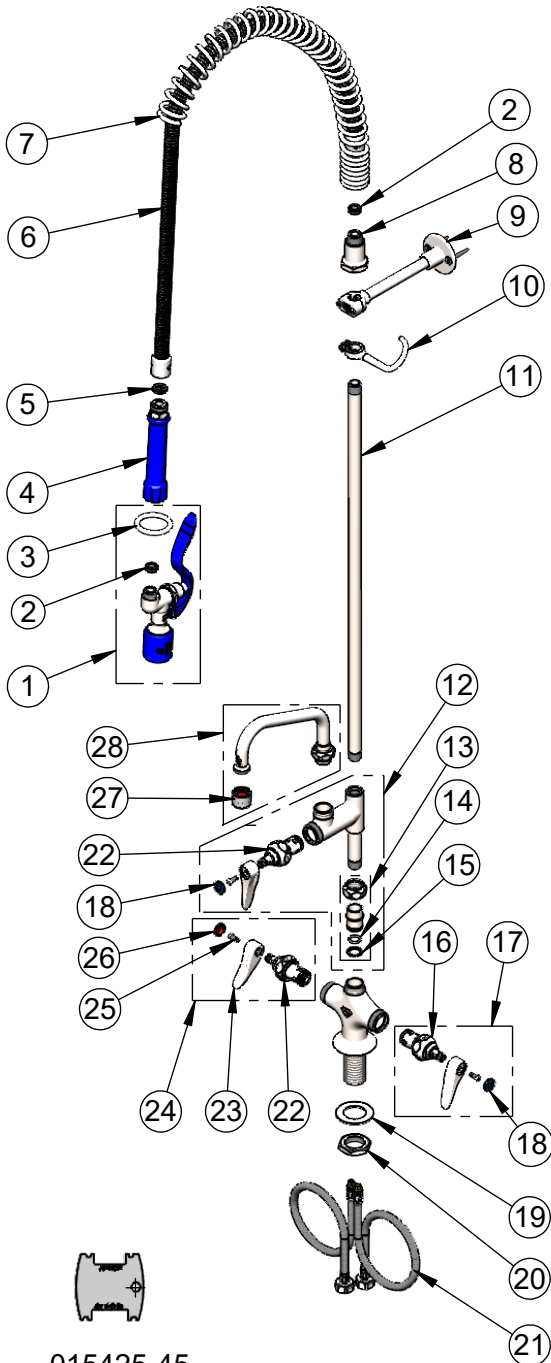
www.rewardhospitality.com.au

Model No.

AS-0113-06V20-BC

Item No.

4710014



015425-45
Vandal Resistant Key
(Included)

ITEM NO.	SALES NO.	DESCRIPTION
1	S-0107-C	Stainless Steel 0.65 GPM Spray Valve (Blue)
2	010476-45	#27 Washer
3	S000907-30	SS Spray Valve Hold Down Ring
4	S011482-30	Stainless Steel Grip Handle (Blue)
5	001014-45	Washer, Hose Barrel
6	S-0044-H2A	44" Flexible Stainless Steel Hose, Less Handle
7	S000888-30	SS EasyInstall Overhead Spring
8	S000821-30	Stainless Steel Spring Body
9	S-0109-01	Stainless Steel 6" Wall Bracket
10	S004R	Stainless Steel Finger Hook
11	S000372-30	Stainless Steel 3/8" NPT x 24" Riser
12	AS-0155-LNEZ	Stainless Steel EasyInstall Add-On Faucet w/ Full Turn Eterna Cartridge & Lever Handle (Less Nozzle)
13	SEZ-K	Stainless Steel EasyInstall Kit: Nut, Bushing, O-ring & Lock Washer
14	001065-45	O-Ring
15	014200-45	Star Washer, Anti-Rotation
16	S012442-30FT	Stainless Steel Full Turn Eterna Cartridge w/ Spring Check, LTC
17	S002711-30FT	Stainless Steel Full Turn Eterna Cartridge w/ Spring Check, Handle, Blue Index & Screw, LTC
18	018506-19NS	Blue Button Index, Press-in
19	S007365-20	Stainless Steel Lock Washer
20	S000965-20	Stainless Steel Lock Nut
21	012436-45DR	Flexible Connector Hose
22	S012443-30FT	Stainless Steel Full Turn Eterna Cartridge w/ Spring Check, RTC
23	S001638-30NS	Lever Handle (New Style)
24	S002712-30FT	Stainless Steel Full Turn Eterna Cartridge w/ Spring Check, Handle, Red Index & Screw, RTC
25	000925-45	Lab Handle Screw
26	001193-19NS	Red Button Index, Press-in
27	S-0199-06-F20	VR 2.0 GPM [7.6 L/min] Aerator, 55/64-27 Female w/ Key
28	S059X-V20	Stainless Steel 6" Swing Nozzle

Product Specifications:

Pre-Rinse Unit: EasyInstall Stainless Steel Single Hole Deck Mount Mixing Faucet, SS Full Turn Eterna Cartridges w/ Spring Checks, SS Lever Handles, SS Add-On Faucet, SS 6" Swing Nozzle w/ 2.0 GPM VR Aerator, 44" Flexible Stainless Steel Hose, SS 0.65 GPM Spray Valve, SS 6" Wall Bracket & Flexible Stainless Steel Supply Hoses

Product Compliance:

ASME A112.18.1 / CSA B125.1
NSF 61 - Section 9
NSF 372 (Low Lead Content)
AS/NZ WaterMark / WELS